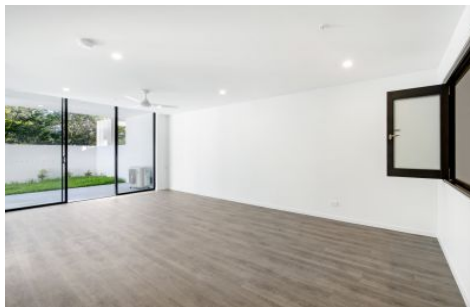
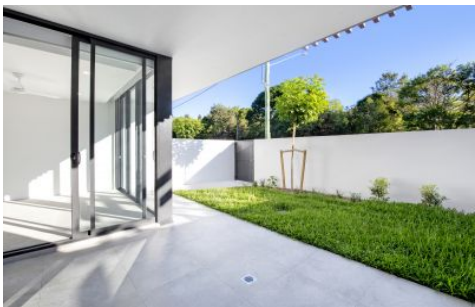





# Stewart

ESTATE AGENTS



20/249 Ashmore Road Benowa QLD

2  2  1 

Break lease

Situated in Woodtree Residences, opposite the botanical gardens. Walking distance to Pindara Hospital, Benowa Gardens Shopping Centre, Benowa High School, Benowa Primary and St Kevins primary school.

**Type** : Apartment

**Price** : \$780 pw

**View** : <https://www.stewartestateagents.com.au/lease/qld/gold-coast/benowa/residential/apartment/8705722>

- \* 2 Bedrooms
- \* 2 Bathrooms
- \* Ducted aircon
- \* Gourmet kitchen with stone bench and stainless-steel appliances - including dishwasher
- \* Huge private balcony
- \* Zen Rooftop Garden with BBQ area
- \* Under cover secure parking



**Karen Stewart**  
07 5570 3791

[For full version visit the website](https://www.stewartestateagents.com.au)

<https://www.stewartestateagents.com.au>