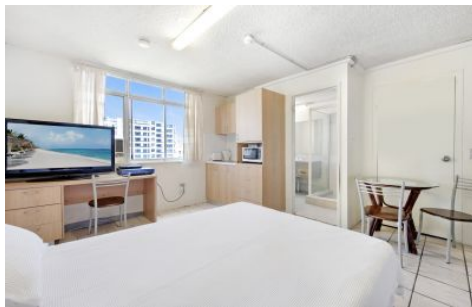


Stewart

ESTATE AGENTS



Level 6/602/2 Barney Street Southport QLD

1 

Situated in Southport Towers, this freshly painted studio apartment may be compact, yet it is in a great location.

View : <https://www.stewartestateagents.com.au/lease/qlld/gold-coast/southport/residential/studio/7517502>

Contains

- ? Double bed
- ? Microwave
- ? Fridge
- ? Small round glass table
- ? TV

- ? Walking distance to the tram (250m)
- ? Woolworths Metro and Sundale shopping/retail precinct across the road!
- ? Easy access to Griffith University, Gold Coast Hospital, Surfers Paradise, and Pacific Fair Broadbeach.
- ? Catch the light rail to Helensvale and the Railway



Karen Stewart
07 5570 3791